

ELDIAR
1989
FURNITURE & DESIGN

THEODORE ALEXANDER







DONWELL SIDE TABLE

Item code: 5005-893

Size: W 63.5 x D 63.5 x H 63.5 cm

A mahogany veneered and satinwood strung accent table, the break-bowfront sides with a brass inlaid edge above a frieze drawer and yew burl veneered corner panels, on reeded supports joined by a swirl mahogany and satinwood banded undertier, on fluted peg feet with brass cappings.



DONWELL COCKTAIL TABLE

Item code: 5105-377

Size: W 137.2 x D 686.4 x H 50.8 cm

A mahogany veneered and satinwood strung cocktail table, the breakfront sides and 'D' end top with a brass inlaid edge above two frieze drawers and a concealed centre drawer in yew burl veneer, on reeded supports joined by a swirl mahogany and satinwood banded undertier, on fluted peg feet with brass cappings.



DONWELL CONSOLE

Item code: 5305-294

Size: W 152.4 x D 38.1 x H 86.4 cm

A mahogany veneered and satinwood strung console table, the breakbowfront top with a brass inlaid edge above two frieze drawers and a yew burl veneered concealed drawer and corner panels, on ebonised and gilt reeded supports joined by a swirl mahogany and satinwood banded undertier, on fluted peg feet with brass cappings.





Body fabric
1300-14



Throw pillows
fabric
8108-86

TAILORED THEODORE ALEXANDER SOFA

Item code: T324N

Size: W 248.92 x D 93.98 x H 78.74 cm

Our Tailor Fit Program helps you create sofas, chairs, sectionals, and loveseats in the size you need, all customized to your desired style. We also offer full personalization from COM to upholstery by the inch. We are proud to work side-by-side with extraordinary artisans and master craftsmen. Together, we produce authentic upholstered designs incomparable in quality, complexity and detail. Our 8-way hand tied upholstery technique provides luxury upholstered seating with the same high standards Theodore Alexander has become known for. The result? Exquisite handmade upholstered furniture that will stand the test of time.





THE GEORGIAN THREE TIER CONSOLE

Item code : 5305-302
Size: W 127 x D 38.1 x H 89.5 cm

The Georgian Three Tier Console - Theodore Alexander is shaped by English Heritage handcrafts furniture and accessories for your home with uncompromising quality



THE ROUNDED CONSOLE TABLE

Item code: 5305-228
Size: W 137.8 x D 38.7 x H 88.9 cm

A laurel burl veneer and solid acacia console table, the rectangular top with rounded ends with a three quarter pierced brass gallery above two long frieze drawers, on turned and tapering fluted legs joined by an undertier similar to the top. Inspired by a Louis XVI original.





CARA SOFA

Item code: 495-73

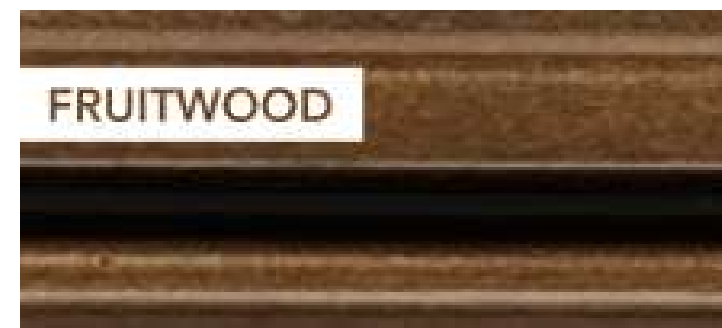
Size: W 185.42 x D 90.17 x H 85.09 cm

A handcarved beech and upholstered settee, the pierced chainlink carved top rail with a scroll over back and arms above with two back cushions, a bench seat and two Canadian Down arm pillows standard, the foliate carved seatrail on turned and tapering legs with fluted details and flowerhead capitals.

Inspired by a Louis XVI original.



Body and cushions
and armchair fabric
1329-14



Wood finish



EVANNA

Item code: 9175

Size: W 77.47 x D 76.2 x H 96.52 cm

The Evanna, Upholstered Chair is a cozy and alluring piece that brings satisfaction to any home. It is found within the arm chairs subgroup. Evanna, Upholstered Chair is available inside Good's Home Furnishings which is located inside Hickory Furniture Mart. Their showroom phone number is 828-322-3471 if you would like to contact them directly for additional details.

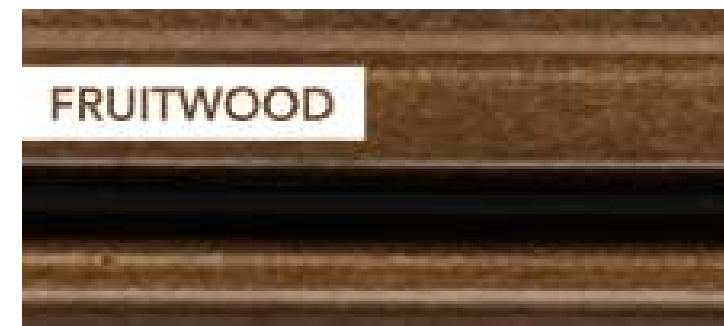




Body fabric
2022-14



Body fabric
2045-12



Wood finish

CRETE UPHOLSTERED CHAIR

Item code: 8647

Size: W 74.93 x D 74.93 x H 93.98 cm

A finely hand carved fauteuil or accent chair, the tufted scoop back with paper twist carving and a floral crest trailing to padded arms and acanthus leaf scroll arms with Guilloche carved uprights, enclosing a cushion seat above a paper twist carved seat rail, on turned a fluted legs. Inspired by a Louis XVI original.



REGAL COCKTAIL TABLE

Item code: 5105-160
Size: W 142.24 x D 91.44 x H 51.12cm

A flame veneered and solid cocktail table, the serpentine brass bound top above two drawers on each side centred by a leather inset slide drawer with a concealed drawer, all with brass Rocaille handles, on square tapering, fluted legs joined by a serpentine brass bound undertier.



A REGAL CONSOLE

Item code: 5305-346
Size: W 163.8 x D 40.6 x H 86.4 cm

Flame Veneered & Crossbanded Top & Ramsey Mahogany Finish & Brass Bound Serpentine Top & Three Frieze Drawers with Rocaille Handles & Fluted & Roundel Decorated Legs & Brass Bound Undertier & Stepped Brass Feet



IN THE GRAND MANNER SIDE TABLE

Item code: 5005-392
Size: W 66.68 x D 66.68 x H 68.58cm

A flame veneered and solid mahogany lamp table, the serpentine square brass bound top above a shaped frieze drawer with finely cast brass Rocaille handle, on square tapering and fluted legs applied with roundels and joined by a serpentine brass bound undertier.





AN OKUMÉ AND MOTHER OF PEARL INLAID SIDE CABINET

Item code:6105-320-FML
Size: W 127 x D 48 x H 86 cm

An okumé and mother of pearl marquetry inlaid side cabinet, the rosewood crossbanded breakfront top above three frieze drawers with guilloche inlay, above three cabinet doors each enclosing an adjustable shelf, on canted square tapering legs.
The original Empire.



APRIL ACCENT TABLE

Item code: 5005-575-FML

Size: W 48.90 x D 48.90 x H 82.55 cm

A cherry, morado and mother of pearl inlaid lamp table, the circular brass galleried marquetry top and undertier of scrolling leaves above a morado inlaid frieze, on cariole legs terminating in sabots. The original Louis XV, circa 1770.



LA GRECQUE ACCENT CHAIR EGLOMISÉ

Item code: 4100-489

Size: W 61.6 x D 61 x H 90.2 cm

A hand carved and gilt armchair, with inset églomisé silvered panel back, upholstered seat and scroll arms. The original Regency, circa 1815.



PERFECT NEST OF TABLES

Item code: 5005-650

Size: W 48.9 x D 38.74 x H 66.68 cm

A nest of two ash burl tables, the moulded edge rectangular tops above delicate turned and fluted end supports on sleigh feet. The originals Regency.



THE BEAUTY ACCENT TABLE

Item code: 5005-688

Size: W 61 x D 61 x H 71.8 cm

A mahogany and marquetry tripod table, the circular top with a flowerhead inlay in specimen veneers, on a turned and spiral carved column issuing three curved legs with inswept scroll feet. Inspired by a Victorian original.



CONSOLE DESSERTTE

Item code: 5305-095
Size: W 119.38 x D 41.28 x H 90.17 cm

A mahogany and gilt mirror-back console dessertte, the finely cast moulded edge top and bowfront tiers below, the top with three frieze drawers, on Corinthian column supports.



SWENSON SOFA

Item code: 4500-072
Size: W 233.68 x D 91.44 x H 100.33 cm

A Byron finish mahogany sofa, the padded arched top rail enclosing a slatted parquetry back, with padded arms and a cushion seat, on splayed legs. The original 19th century Swedish.

WOODEN LEATHER UPHOLESTERED ARM CHAIR

Item code: 4100-623
Size: W 69.85 x D 71.76 x H 102.87 cm

High grade leather upholstered chair, comfortable seat and back, solid wood with hand carved details on arms and leg.



Body Leather
LE0331A
Renwick





CONSIDERED GAZE ESSENTIAL DRESSING TABLE

Item code: 6105-047-FML
Size: W 100.3 x D 54 x H 134 cm

A laurel burl dressing table, the oval mirror between verdigris brass supports, the kidney shaped top with a frieze drawer, on turned tapering legs. The original Louis XVI.



THE MASTER'S ART MEDIA TV CONSOLE

Item code: 6205-029
Size: W 220 x D 58 x H 68 cm

A fine okumé veneered, mother of pearl inlaid and rosewood crossbanded media console, the breakfront top above four frieze drawers and four mother of pearl fan medallion inlaid doors enclosing adjustable shelves, on a plinth base with bracket feet. Inspired by a George III original in the Neo-Classical style.





CORNWALLIS CONSOLE

Item code AL53022

Size: W 101.6 x D 35.6 x H 88.3 cm

A fine flame veneered console table, the concave sided top with a fine brass gallery above a central panelled frieze drawer, on turned, brass capital and fluted legs joined by a galleried undertier on peg feet.

THE GEORGIAN BUTLER

Item code: AL11011-FML

Size: W 44.45 x D 41.28 x H 74.93 cm

A Sheraton mahogany Butler's serving table hand painted with the Spencer crest, with an undulating gallery fitted with a brass carrying handle on out swept square tapering legs united by an 'X' stretcher. The King William bedroom. The original George III.





ADMIRALTY ACCENT TABLE ALTHORP LIVING HISTORY

Item code:AL50079

Size: w 42.55 x D 42.55 x H 71.12 cm

A mahogany lamp table, the circular brass bound top fitted with a frieze drawer on three bound brass hilted sabres mounted on a trefoil platform base with brass lion's paw feet. Inspired by the 2nd Earl Spencer, appointed 1st Lord of the Admiralty in 1795. The original Regency.



THE WINDOW JARDINIÈRE

Item code: AL16007-FML

Size: W 74.93 x D 43.18 x H 78.74 cm

A marquetry and brass mounted jardinière, the square caddy moulded top painted with the Spencer coronet, with a pierced brass gallery and an inset removable brass liner above an interlacing strap work marquetry inlaid frieze tapering cabriole legs with finely cast ormolu mounts and sabots.





FLOURISH CABINET

Item code: AL61076-FML
 Size: W 95 x D 46 x H 92 cm

A flame mahogany, ebonised and brass mounted inlaid side cabinet, the rectangular brass bound top with canted corners above a long drawer with Rococo escutcheons and handles above two crossbanded and ebony strung doors with finely cast mounts to the centre on trailing floriate mounted and canted legs.



Flourish Console

Item code: AL53039-FML
 Size: 137.8 W x 36.2 D x 85 H cm

An ebonised mahogany, flame veneered and finely cast brass mounted console table, the rectangular brass edged top with canted corners above three frieze drawers with rococo brass handles, on chamfered Caryatid and floral mounted legs joined by an undertier. Inspired by a French original, circa 1770.



UNDULATING SOFA

Item code: A408.5

Size: W 166.37 x D 81.28 x H 95.25 cm

A finely carved and gilt Neo-classical sofa, the gently undulating rectangular padded back and arms with turned, fluted and leaf carved uprights above a Greek key frieze on turned legs. The original Regency, circa 1800.



Body for armchair &
sofa fabric
1342-91c



Throw pillows
fabric
5047-92



UNDULATING ARMCHAIR

Item code: A204.5

Size: W 83.82 x D 81.28 x H 95.25 cm

A finely carved and gilt Neo-classical matching armchair; the gently undulating rectangular padded back and arms with turned; fluted and leaf carved uprights above a Greek key frieze on turned legs. The original Regency, circa 1800.



THE REGENCY TORCHÈRE

Item code: RE17001
Size: W 37.47 x D 33.02 x H 121.92 cm

A finely hand carved mahogany and silver leaf torchère, a wreath carved circular top with a lattice carved and flowerhead frieze, on three bell flower carved tapering supports terminating in lion paw feet, joined by a trefoil guilloche carved undertier and on a canted triangular pedestal base..

ACKLOM LAMP

Item code AL20095.Z06
Size: W 38 x D 38 x H 77 cm

A floral cast brass table lamp, the leaf spray body issuing hand blown glass flowers above a glass sphere and a brass pedestal base, surmounted by a hand sewn waisted fabric shade and a brass and glass ball finial. Inspired by the brass lamps at Althorp.

HENRIETTE LAMP

Item code: AL20094
Size: W 33.00 x D 33.00 x H 89.00 cm

A finely cast brass and glass table lamp, the fluted stem with an acanthus capital and spiral baluster base upon a reeded edge circular brass platform with bun feet, surmounted by a glass sphere and sewn fabric shade and brass and glass ball finial. Inspired by the brass lamps at Althorp.





THE ROCOCO MIRROR

Item code: RE31009

Size: W 64.14 x D 3.18 x H 125.10 cm

A hand carved and suede gilt wall mirror, the scroll and acanthus leaf carved frame. The original George II, circa 1750.

CURIOUS ISLE OF MAN TRIPOD

Item code: RE50008

Size: W 60.96 x D 60.96 x H73.66 cm

A most remarkable and rare pollard burl and mahogany 'Manx' tripod table, the circular top with a fine swag cast brass gallery supported on a turned column with unusual Ballerina legs with bent knees and finely cast brass swag mounts and strapped shoe feet





MELINA COCKTAIL TABLE

Item code: SC51012.C188

Size: W 137.2 x D 81.3 x H 750.8 cm

A fine flame mahogany and Morado banded side table with fan marquetry, brass line and mother of pearl inlays, the rectangular bowed edge rubbed nickel brass finish bound top with lobed corners, above a cast brass acanthus scroll applied frieze, on acanthus cast brass capped cabriole legs with scroll cast feet and joined by a brass bound and veneered undertier.



MELINA SIDE TABLE

Item code: SC50028.C188

Size: W 66.67 x D 66.67 x H 73.66 cm

A fine flame mahogany and Morado banded side table with fan marquetry, brass line and mother of pearl inlays, the circular Old English finish brass bound top with lobed corners, above a cast brass acanthus scroll applied frieze with one drawer, on acanthus cast brass capped cabriole legs with scroll cast feet and joined by a brass bound and veneered undertier.



NEVILLE GILT NIGHTSTAND

Item code: SC50008

Size: W 68.6 x D 50.8 x H 66.04 cm

An Oxford finish swirl walnut and mahogany banded parcel gilt Nightstand with Movingue and ebonized stringing details, the serpentine molded edge top above two shaped drawers with fine brass handles, on finely acanthus carved cabriole legs.



EULALIE US KING BED

Item code: SC83003

Size: W 210.4 x D 227.5 x H 144.8 cm

Mattress size: W 195 x D 205 cm

An Oxford finish mahogany and quartered Etimoe hand-veneered framed and upholstered US King Bed, the serpentine arched headboard with trailing vine mounts to the crest and corners, with upholstered and molded rails and a footboard, on acanthus leaf carved cabriole legs.



Belle-UP0611



UP0608



Lilian Cream-UP5044

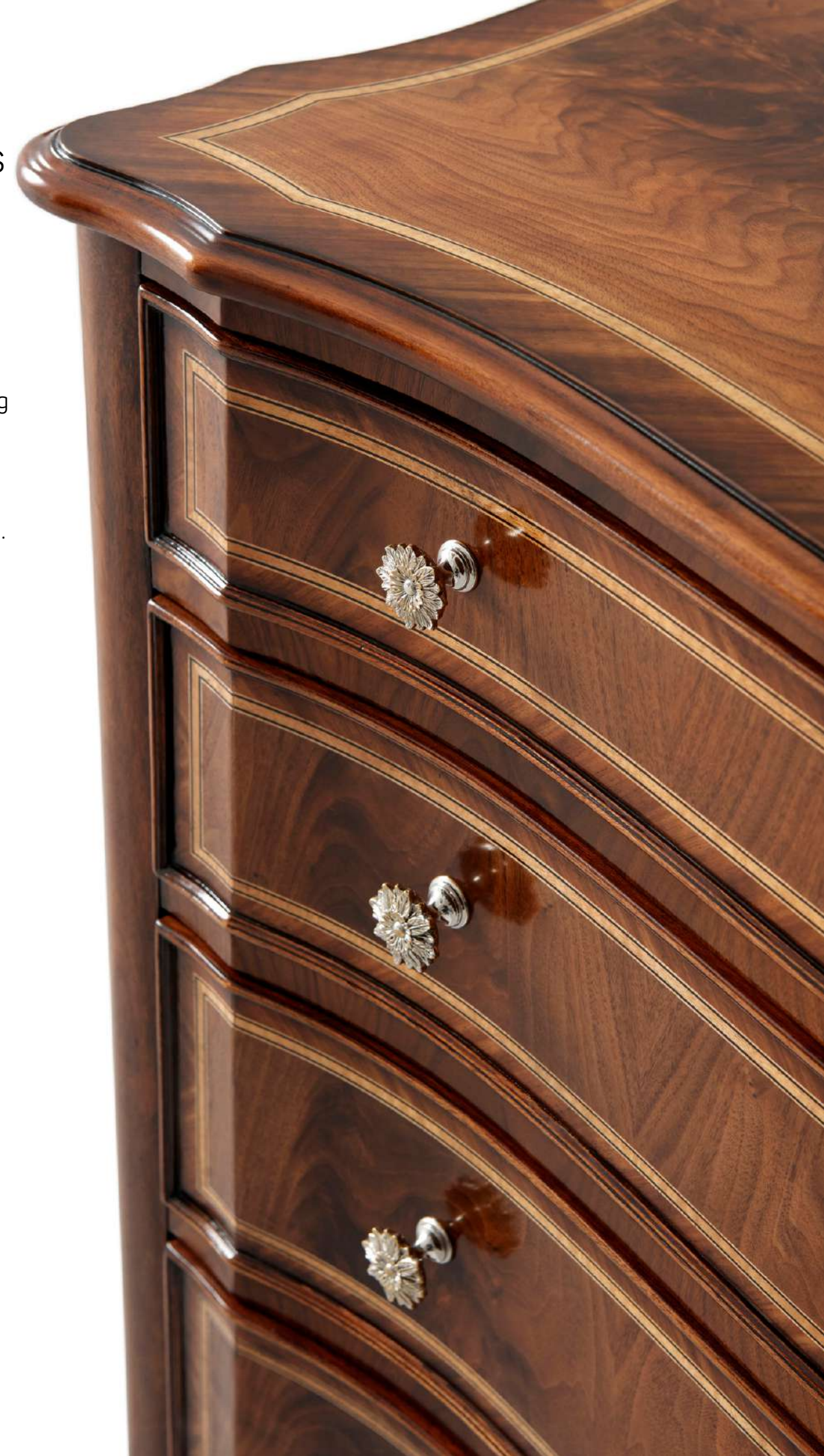


NEVILLE CHEST OF DRAWERS

Item code: SC60011

Size: W 111.8 x D 53.34 x H 91.44 cm

An Oxford finish swirl walnut and mahogany banded chest of drawers with Primavera and ebonized stringing details, the serpentine molded edge top above four graduated drawers with fine brass handles, above a shaped apron on carved cabriole legs.



FINE SHAPE WALL MIRROR

Item code: 3105-157

Size: W 82.6 x D 3.2 x H 142.2 cm

Theodore Alexander is shaped by English Heritage handcrafts furniture and accessories for your home with uncompromising quality. They also believe that the person who owns a piece of Theodore Alexander Furniture should take comfort in knowing the item can be viewed from any side and they have made the piece by using a time-honored, handcrafted method that is the true mark of high quality.



ERGISI SOFA

Item code U1004-94

Size: W 238.76 x D 101.6 x H 91.44 cm

A sumptuous sofa with exotic Ottoman empire influences ticks all the luxury boxes. Canted knoll arms flank a bench cushion and back with four throw pillows standard. Perfectly tailored with a welt trim crest, underscoring the sofa's beautiful lines. In place of a skirt, a long tassel fringe circles the sofa base.



**Body fabric
4024-92**



**Throw pillows fabric
5058-46**



Trimming CL1792

JOSEPHINE OTTOMAN

Item code: U8014-27

Size: W 68.58 x D 55.88 x H 40.64 cm

Boxed-upholstered seat ottoman set on turned and fluted tapering legs with brass cappings and casters. Pairs brilliantly with an easy chair, but indispensable throughout the home, wherever extra seating is required or desired.



**Body ottoman fabric
5058-46**





REPOSE UPHOLSTERED KING BED

Item code: TA87013.1CKJ
Size: W 193.6 x D 220.8 x H 139.3 cm
Mattress size: W 180 x D 200 cm

The Repose Upholstered US King Bed is nestled in an exposed wood base while the headboard and bottom rails are neatly upholstered. Clean lines, soft corners, and a neutral finish invite you for a good night's sleep.



REPOSE OPEN NIGHTSTAND

Item code: TA50212.C322
Size: W 81.3 x D 50 x H 55.8 cm

The Repose single-drawer open nightstand is the perfect size for any bedroom. Handcrafted of wood and quarter straight cut Oak Veneer, the multistep hand finishing process raises the natural grain of the wood and creates a lovely brushed finish. Choose between Grey Oak and Charcoal Oak to perfectly complete the look of the space.



REPOSE 8 DRAWER DRESSER

Item code: TA60100.C322
Size: W 180.3 x D 61 x H 91.5 cm

The Repose 8 Drawer Dresser is dressed in a quarter straightcut Oak Veneer in Grey Oak and Charcoal Oak to assimilate with your current decor. This dresser is horizontally configured enabling it to not be an intrusive piece in the space and for the convenience of all who use it.



KESSLER EXTENDED SOFA

Item code: TASU50103-95

Size: W 241.3 x D 96.52 x H 86.36 cm

Triple Loose Cushion Back & Seat

Two throw pillows standard

Tuxedo Arms



Body fabri
6185-11



Throw pillows fabric
6205-96



SELBY UPHOLSTERED CHAIR

Item code: 5198

Size: W 83.82 x D 76.2 x H 76.2 cm

Tight Back Loose Seat Cushion
'Torpedo' carved and Turned Maple
Legs



Body fabri
6205-96



CAIT OTTOMAN

Item code: 5158-11
Size: W 76.2 X D 61 X H 48.3 cm

A rectangular ottoman, the boxed cushion top above an upholstered base with nail head trim, on square tapering legs.



MERIWETHER SOFA

Item code: 665-92
Size: W 233.7 X D 111.8 X H 96.5 cm

Meriwether Sofa - Upholstered Sofa & Camel Back with triple Loose Cushions & Loose Triple 'T' Cushion Seat with four Throw Pillows & Downswept and outscrolled arms with Nail trim Details & Serpentine Base with Square Tapering Leg.

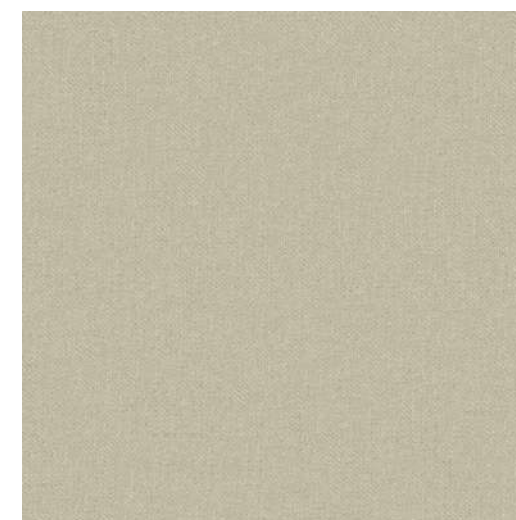


PATRICK CHAIR

Item code: U3154-30
Size: W 76.2 x D 78.74 x H 83.82 cm

The Patrick Chair by Alexa Hampton features shaped exposed wood legs that accent the softly curved arms and tight back.

Fabric: As is



Body fabri
1313-92



Throw pillows fabric
7083-14

Special Discounts



20%



20%



20%



20%



20%



20%



20%



15%

T&C apply.

ELDIAR

1989

FURNITURE & DESIGN

Visit us in
Marina Mall,
Abu Dhabi.