

THEODORE ALEXANDER *June 23 Catalogue*



Inspired by the innate human desire to connect with nature.



Catalina

Lido



CATALINA COLLECTION

Inspired by the innate human desire to connect with nature, the Catalina collection is influenced by natural elements to create a personalized ecosystem.

The collection highlights the artful grain patterns naturally occurring in wood as well as textures found in porous stone surfaces that invite memories of a hike in the forest or a stroll along the shore.



CATALINA BRANCH CONSOLE

Item code: TA53045.C301

Size: W 172.8 x D 40.6 x H 86.4 cm

Contemporary console table made of figured ash available in Dune or Earth with cast metal legs in our Volcanic finish and done with our stone-like porous Mineral Finish at the top Shown in Earth Finish, Anti-Tip kit' provided Computer Generated Image.



CATALINA UPHOLSTERED US KING BED

Item code: TA83011.1CIR

Size: W 207.4 x D 218.6 x H 162.6 cm

Fabric: UP6169 / Finish Earth

A modern eye-catching statement piece, our Catalina Upholstered Bed available in your choice of our Dune or Earth finish with a smooth straight grain exposed oak trim.

CATALINA SINGLE DRAWER NIGHTSTAND

Item code: TA50092.C301

Size: W 61 x D 48.3 x H 76.2 cm

A modern single drawer nightstand perfect for any bedroom. Seen here in clean cut figured ash available in Dune or Earth with a textured metal pull in Ember finish. Completed with a stone-like porous top in our exclusive Mineral finish.

CATALINA CHEST OF DRAWERS

Item code: TA60043.C301

Size: W 127 x D 50.8 x H 96.5 cm

Essential three drawer chest made of figured cathedral ash in an artful grain pattern with soft close drawers. Available in Dune or Earth with metal pulls in Ember finish and top is done in our exclusive porous Mineral finish.









CATALINA COCKTAIL TABLE

Item code: TA51059.C301 & TA51062.C301

Size: W 122 x D 71.1 x H 41.9 cm (Rectangular)

W 137.2 x D 137.2 x H 41.9cm (Circular)

Intricate rectangle cocktail table & Serene circular cocktail table made of figured cathedral ash in your choice of Dune or Earth finish. The legs of this table are finished in our new cool, porous Mineral finish.



CATALINA ACCENT TABLE AND SIDE TABLES III

Item code: 1 - TA50090.C301
2 - TA50093.C301

Size: W 31.3 x D 31.3 x H 55.9 cm

W 55.3 x D 55.3 x H 61 cm

Contemporary accent table made of figured ash available in Dune or Earth with top in our stone-like porous Mineral finish.



CATALINA SIDE TABLE

Item code: TA50088.C301

Size: W 61 x D 48.3 x H 76.2 cm

Dynamic side table made of figured cathedral ash in your choice of Dune or Earth finish. The legs of this table are done in our stone-like porous Mineral finish. Shown in Earth Finish





CATALINA BOOKCASE

Item code: TA63007.C301

Size: W 111.8 x D 45.7 x H 228.6 cm

Modern two door bookcase in figured cathedral ash available in Dune or Earth with metal pulls in Ember. Completed three exposed fixed shelves in our exclusive porous Mineral finish. An adjustable shelf can be found in the cabinet.



CATALINA CONSOLE

Item code: TA53042.C301

Size: W 172.8 x D 35.6 x H 86.4 cm

Modern console table made of figured ash in artful grain patterns. Available in your choice of Dune or Earth with our exclusive stone-line porous Mineral finish on the top.







CATALINA DINING SIDE CHAIR II

Item code: TA40012.1CGO & TA41012.1CGO
Size: W 55.9 x D 66.5 x H 90.2 cm (Side Chair)
W 61 x D 65.3 x H 89 cm (Arm Chair)

Solid oak dining side chair & dining arm chair available in your choice of Dune or Earth with a comfortable upholstered seat and back in Windswept fabric.



CATALINA EXTENDING DINING TABLE

Item code: TA54024.C301

Size: W 337.9 x D 111.7 x H 76.2 cm

Celebrating the natural grain patterns of ash, this extension dining table is available in your choice of Dune or Earth and includes two 18" leaves.



CATALINA CABINET

Item code: TA61056.C301

Size: W 198.1 x D 53.3 x H 96.5 cm

Four door media cabinet in figured cathedral ash in an artful grain pattern available in either Dune or Earth. Completed with metal pulls in Ember and a top in our exclusive Mineral finish. An adjustable shelf can be found in each cabinet.





LIDO COLLECTION

A modern view of transitional luxe, Lido creates an air of timeless elegance that blends seamlessly with today's contemporary style. Simplistic forms and clean architectural lines, influenced by the works of George Hepplewhite, are paired with reeded carvings as a nod to the French Provincial aesthetic. Figured Prima Vera and Beech, featured in our dark Bistre finish, is complimented by a beautifully honed Crema Marfil marble stone top. Lido's custom forged hardware adds an alluring air of sophistication in a dark rubbed bronze finish, echoing the reeding details throughout.



LIDO RECTANGULAR DINING TABLE

Item code: TA54047.C305

Size: W 303.3 x D 105.2 x H 76.2 cm

The Lido Rectangular Dining Table, crafted in a Prima Vera in our Bistre finish, features a reeded apron set upon sleek tapered legs. Includes two leaf inserts and two additional legs for a more luxurious dining experience.



LIDO BUFFET

Item code: TA61063.C305

Size: W 181.6 x D 48.3 x H 86.2 cm

The Lido Buffet features a sophisticated tapering silhouette and reeded angular doors, crafted from Prima Vera in our Bistre finish and complimented by a beautifully honed inset Crema Marfil marble stone top. The custom forged hardware, finished in a dark rubbed bronze, echoes the reeded details throughout.



LIDO UPHOLSTERED DINING SIDE CHAIR & ARM CHAIR

Item code: TAS40006.1CIF & TAS41006.1CIF

Size: W 55.88 x D 66 x H 101.6 cm

Size: W 61 x D 66 x H 101.6 cm

Fabric: UP6216

The Lido Upholstered Dining ArmChair features a sleek, channeled design and tapered solid beech legs in our Bistre finish.







LIDO US KING BED II

Item code: TA83017.1CIH

Size BED: W 203.5 x D 219.1 x H 128.3cm

Size Mattress: 193 x 203 cm

Fabric: UP6217

The Lido US King Bed II features an upholstered platform frame and sophisticated channeled headboard, set within our Bistre finished Prima Vera.



LIDO MIRROR

Item code: TA31009.C305

Size: W 91.4 x D 3 x H 91.4 cm

Mirror The Lido Mirror features a reeded frame in our Bistre finish encircling a beveled mirror.



LIDO DRESSER

Item code: TA60046.C305

Size W 165.1 x D 49.3 x H 85.9 cm

Dresser The Lido Dresser, crafted from Prima Vera in our Bistre finish, features a sophisticated tapered silhouette with 6 reeded drawer fronts. The custom forged hardware, finished in a dark rubbed bronze, echoes the reeded details throughout.



LIDO NIGHTSTAND V

Item code: TA50114.C305

Size: W 61 x D 48.3 x H 55.9 cm

The Lido Nightstand V, crafted from Prima Vera in our Bistre finish, features a sophisticated tapered silhouette and reeded drawer and shelf. The custom forged hardware, finished in a dark rubbed bronze, echoes the reeded details throughout.







LIDO DRAWER SIDE TABLE

Item code: TA50099.C305
Size: W 60.8 x D 75.8 x H 60.8 cm

The Lido Drawer Side Table, crafted from Prima Vera in our Bistre finish and complimented by a beautifully honed inset Crema Marfil marble stone top, features a sophisticated tapered silhouette and reeded carved details. The custom forged hardware, finished in a dark rubbed bronze, echoes the reeding throughout.



LIDO COCKTAIL TABLE

Item code: TA51063.C305
Size: W 122.5 x D 71.6 x H 44.2cm

The Lido Cocktail Table, crafted from Prima Vera in our Bistre finish and complimented by a beautifully honed inset Crema Marfil marble stone top, features a sophisticated tapered silhouette, reeded detailing and two drawers. The custom forged hardware, finished in a dark rubbed bronze, echoes the reeded details throughout.



LIDO ROUND COCKTAIL TABLE

Item code: TA51066.C305
Size: W 137.6 x D 137.6 x H 44.2cm

The Lido Round Cocktail Table, crafted from Prima Vera in our Bistre finish and complimented by a beautifully honed inset Crema Marfil marble stone top, features a sophisticated tapered silhouette and reeded carved details.



LIDO SIDE TABLE II

Item code: TA50101.C305
Size: W 65.7 x D 60.6 x H 60.8cm

The Lido Side Table II, crafted from Prima Vera in our Bistre finish and complimented by a beautifully honed inset Crema Marfil marble stone top, features a sophisticated tapered silhouette with reeded carved details throughout.





LIDO BOOKCASE

Item code: TA63009.C305

Size: W 107.3 x D 40.6 x H 236.2cm

The Lido Bookcase, crafted from Prima Vera in our Bistre finish, features two concealed storage areas with reeded carved details throughout. The custom forged hardware, finished in a dark rubbed bronze, echoes the reeding throughout.

LIDO DESK

Item code: DESK TA71012.C305
Size: W 139.7 x D 65.8 x H 75.7cm

The Lido Desk, crafted from Prima Vera in our Bistre finish, features a sophisticated tapering silhouette and reeded carved details. The custom forged hardware, finished in a dark rubbed bronze, echoes the reeding throughout.



LIDO CONSOLE

Item code: TA53048.C305
Size: W 153.5 x D 36.7 x H 87.2cm

The Lido Console, crafted from Prima Vera in our Bistre finish and complimented by a beautifully honed inset Crema Marfil marble stone top, features a tapered silhouette, reeded detailing, two drawers and a shelf. The custom forged hardware, finished in a dark rubbed bronze, echoes the reeded details throughout.





Alexa Hampton

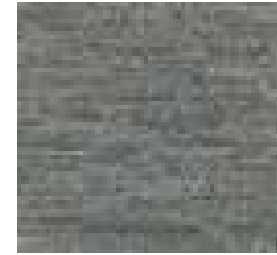
Since Alexa Hampton took the reins of Mark Hampton, her father's iconic firm, as owner and president in 1998, she has advanced its legacy of elegant, practical, classically based interiors for modern living – and extended its global reach. From New York City to Hangzhou, China, her project portfolio encompasses luxe, beautifully layered urban apartments, expansive town and country residences, private airplanes, and yachts. Regularly named to Architectural Digest's AD100 and House Beautiful's Top Designer list as well as Elle Décor's A-List, Hampton translates the classical principles of good design and decoration into some of today's most elegant, enduring, and functional domestic landscapes.

In an ever-expanding portfolio of acclaimed products, Hampton provides smart, stylish, design-rich solutions for every aspect of the home. Ongoing Hampton-designed collections include furniture for Theodore Alexander, lighting for Visual Comfort & Co. and Generation Lighting, window treatments for The Shade Store, fabrics and trims for Kravet, broadloom carpet for Stark, pillows and bedding for Eastern Accents, table linens for La Gallina Matta, hardware for SA Baxter, mantels for Chesney's, architectural mouldings for White River, and flooring for Globus Cork.

STEPHANIE CHAIR

Item code: AXH41011.1CHE
Size: W 59.05 x D 60.32 x H 87 cm

An **accent chair** with personality, Stephanie charms with a pierced trellis back that narrows, in hourglass fashion, to brass-capped sabre legs. Down-swept arms embrace a tight upholstered seat. A wonderful geometry of form in Mahogany.



Fabric: UP5555

EUGENIA DESK

Item code: TA53048.C305
Desk Size: W 165.1 x D 76.2 x H 76.2 cm
Finish: Russian & Painted Gold

This Russian Neoclassical stunner features inlay brass details on the apron and drawer faces in a classic modernized diamond pattern that stays true to historical influences. A leather inset top compliments the fluted legs and brass cappings bringing balance from top to bottom.



LAURENCE ARMCHAIR

Item code: AXH41023.1CDF
Size: W 61 x D 57.2 x H 82.6 cm

A classic klismos form, the Lawrence chair features English Regency details with channel reeded frame on the upper back, recessed back rails with channel detail and recessed rosettes above slim slightly curved legs. An upholstered seat features an outer welt for comfort.

MIRABELLA WRITING TABLE

Item code: AXH71001.C170
Desk Size: W 152.4 x D 71.12 x H 78.74 cm
Finish: Salted white and Painted Gold

Desk Très chic. This writing table is a twist on a French classic. Desktop boasts a gilt-tooled leather inset and frieze slides. Flowerhead fretwork wraps around the apron, outfitted with three drawers. The desk stands on turned and fluted tapering legs.





MIGUEL COCKTAIL TABLE

Item code: AXH51009.C107

Size: W 121.92 x D 121.92 x H 45.72 cm

Miguel is modern industrial chic. It's all about the base, a studded steel monolith bound by bracket supports. Square cocktail tabletop is Mahogany veneered.

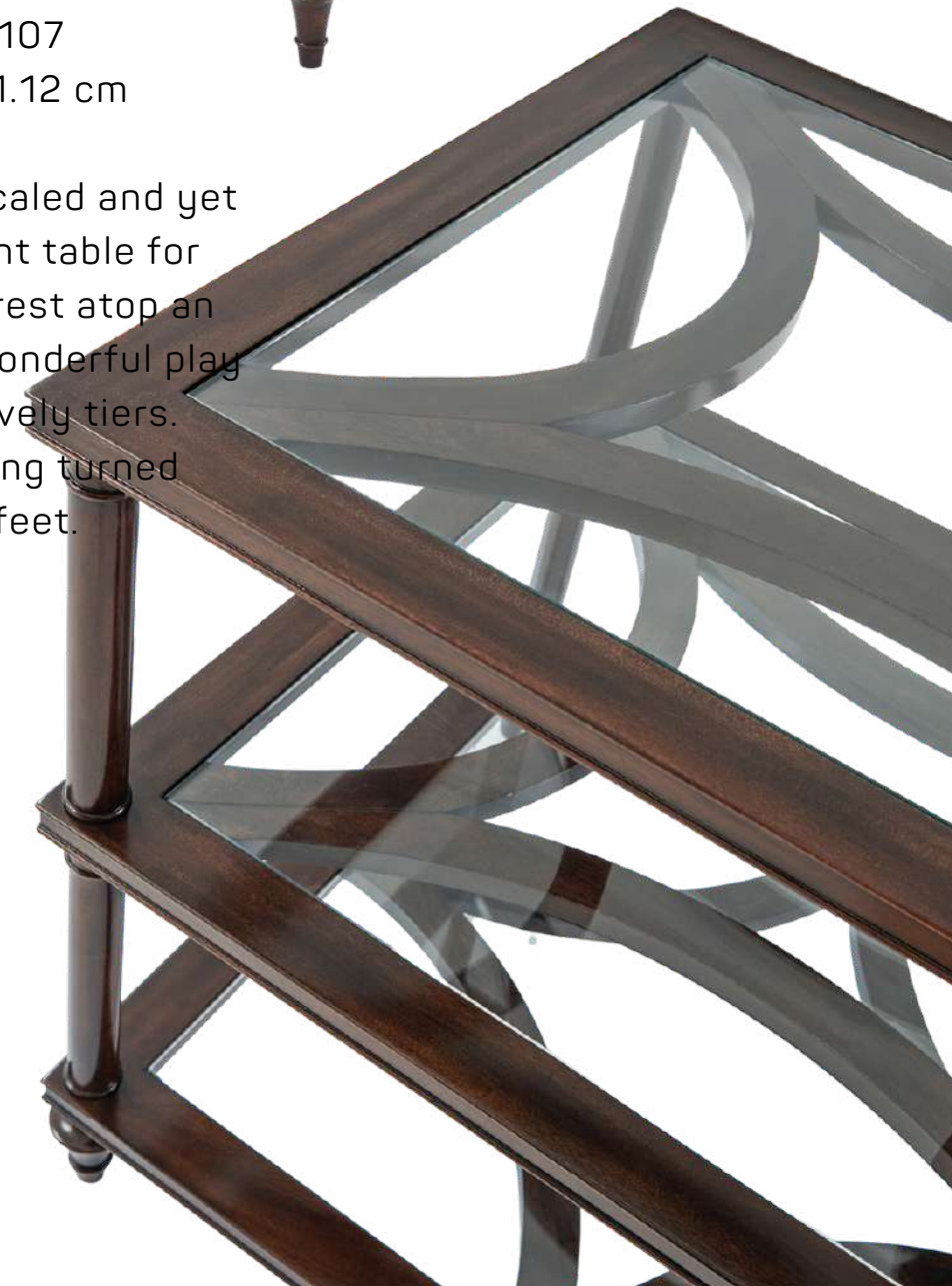


HARRIS SIDE TABLE

Item code: AXH50003.C107

Size: W 76.2 x D 63.5 x H 71.12 cm

Harris is geometric, generously scaled and yet ethereal, a designer go-to accent table for most any interior. Glass inserts rest atop an open trellis fretwork, creating a wonderful play of light and shadow in three lovely tiers. Detailed with bead moldings, ring turned supports and set on peg feet.





COLTER COCKTAIL TABLE

Item code: 5142-001

Size: W 110 x D 110 x H 45.72 cm

A circular Cocktail Table, the Bianco Carrara Marble Top with Brass Finish Molding Detail on a Gilt Bas Relief Column of Mughal Inspired Lattice Stars, on a Domed Disc Metal Base.
Marble has natural variations, and its figure may vary from piece to piece

COLTER SIDE TABLE

Item code: 5042-006

Size: W 63.5 x D 45.1 x H 66 cm

An oval Side Table, the Bianco Carrara Marble Top with Molding Details on a Gilt Bas Relief Column of Mughal Inspired Lattice Stars, on a Domed Oval Disc Metal Base.

Marble has natural variations, and its figure may vary from piece to piece.





COLTER SIDE TABLE II

Item code: 5042-006

Size: W 63.5 x D 45.1 x H 66 cm

An oval side Table, the Oak Veneered Top with Gallery Bronze Finish Geometric Brass Finish Inlay on a Gilt Bas Relief Column of Mughal Inspired Lattice Stars, on a Domed Oval Disc Metal Base.



COLTER COCKTAIL TABLE II

Item code: 5142-002

Size: W 110 x D 110 x H 45.72 cm

A circular cocktail Table, the Oak Veneered Top with Gallery Bronze Finish Geometric Brass Finish Inlay, the Gilt Bas Relief Column of Mughal Inspired Lattice Stars, on a Domed Disc Metal Base.





IN BUTLER'S PANTRY SIDE TABLE

Item code: 6300-076

Size: W 78.74 x D 27.94 x H 80.65cm

A mahogany three tier console table or étagère, with dished tiers, turned supports on verdigris brass cappings. The original Regency.



THE WELCOME ACCENT TABLE

Item code: 5005-662

Size: W 50.8 x D 43.18 x H 74.3 cm

A flame veneered and mahogany lamp table, the oval top on gently splayed acanthus capital and reeded tapering legs joined by an undertier.



ALTHORP

LIVING HISTORY

The histories of the Spencer Family's Heritage and Althorp are so tightly entwined that they would be impossible to unravel and separate. All the Spencers' favorite possessions, which have cascaded down the generations, have ended up in Althorp, this most English of houses, just an hour north of London. Enter its 550-acre park, and you find yourself in a peaceful setting that radiates timeless good taste, with its swathes of fine English oaks stretching out in every direction, while the family's rare herd of black fallow deer graze beneath.

It's a scene familiar to each of the 19 generations of Spencers who have known and loved this corner of England. When Columbus was sailing towards America, my family were farming here. When Britain was defying Hitler, it was a Spencer cousin who helped lead the way – our wartime prime minister's full family name was Spencer-Churchill, though everyone shortens him to Winston Churchill. All through history, during the past five centuries or more, it seems you will find a Spencer there or thereabouts, making their mark, doing their best.

These Spencer ancestors were able to indulge their tastes – to commission art, furniture, and all the finer things in life. You can see the Spencer touch in every corner of Althorp – this historic house that my family has called "home" for over 500 years, and which for the past decade, has been given unprecedented care and attention. A massive program of restoration and repair has taken place, which our partnership with Theodore Alexander has certainly helped. I like to think that, for generations, the house has looked after the furniture. Recently, the very finest handmade reproductions of that furniture by Theodore Alexander have helped restore the house to the very best condition. It seems right and fair.





SOUTH DRAWING ROOM OCCASIONAL TABLE

Item code: AL50195

Size: W 61 x D 61 x H 66 cm

A renowned piece in the collection, this turned occasional pedestal table is sure to command attention. Seen here in Dibdin Crotch finish and complemented with an incredibly intricate brass inlaid apron inspired by a table in the South Drawing Room of the Althorp House. The brass-wrapped posts are supported by three alluring sabre legs finished with embellished brass cappings.

LOUIS XV'S CARYATIDS, OCCASIONAL TABLE

Item code: AL50139

Size: W 56.5 x D 56.5 x H 74.9 cm

A mahogany, flame mahogany veneered and finely cast brass mounted occasional table, the brass bound shaped circular top above a rosewood veneered frieze, on three cabriole legs with caryatid mounts terminating in sabots, united by a shaped undertier. Inspired by a Louis XV original, circa 1770.



CARYATID COCKTAIL TABLE

Item code: AL51028

Size: W 137.8 x D 81.9 x H 46.4 cm

A mahogany, flame veneered and finely cast brass mounted cocktail table, the brass bound serpentine top above a morado veneered frieze with a frieze drawer, on cabriole legs with caryatid mounts terminating in sabots, united by a shaped undertier. Inspired by a Louis XV original, circa 1770.





The Stephen Church Collection

Stephen Church is a master Cabinetmaker who designs as well as makes fine furniture following the tradition of English 18th century cabinetmakers from Adam and Chippendale to Hepplewhite and Sheraton. Today those traditions are maintained with pride by a selected team of craftsmen working at Theodore Alexander.

Stephen acquired a thorough practical knowledge of traditional cabinet making techniques and materials from an early age and has broadened his horizons by working for many years with some of the world's leading furniture specialists. His experienced eye and attention to detail bring together the finest woods and exotic veneers which are finished by hand to Stephen's exacting standards, thus replicating the aged color and patina of the finest pieces created by his famous predecessors.



VENETTA SIDE TABLE II

Item code: SC50023

Size: W 69.8 x D 69.8 x H 66 cm

A fine flame Cerejeira veneered, Morado banded and Sycamore marquetry inlaid side table, the square concave sided cast brass edged top centered by a fan inlay, above a Morado banded paneled frieze with double stringing and one drawer, on similar sabre legs with acanthus leaf cast cappings.



VENETTA COCKTAIL TABLE II

Item code: SC51009

Size: W 78.74 x D 27.94 x H 80.65cm

A fine flame Cerejeira veneered, Morado banded and Sycamore marquetry inlaid cocktail table with fine Mother of Pearl inlaid details, the rectangular concave sided cast brass edged top with canted angles centered by a fan inlay, above a Morado banded paneled frieze with double stringing, on similar sabre legs with acanthus leaf cast cappings.

Collection Features Inspired by a late George III original.





ROSEWOOD BAND TORCHERE

Item code: RE17006

Size: W 73.5 x D 73.5 x H 111.8 cm

A mahogany and rosewood banded torchiere, the square canted edge Brabancon marble top above a flared body with fine brass moulding, on a plinth base with concave cut-out corners. The original by Louis Moreau, Paris, Louis XVI.



PAULETTE OVAL SIDE TABLE II

Item code: SC50029

Size: W 66.7 x D 66.7 x H 66.7 cm

A very fine mahogany and etimoe veneered side table, the Morado and Primavera crossbanded top with fine stringing and a paper twist marquetry design in sycamore and mother of pearl, inlaid to the center with a flowerhead roundel with mother of pearl details, bound in brass above a paneled frieze with floral brass accents and brass inlay, on fluted columns with acanthus capitals and bases, joined by a Primavera crossbanded concave sided undertier.



THE HOLBORN DINING SIDE CHAIR

Item code: SC40007.1BNT & SC41007.1BNT

Size: W 48.26 x D 60.4 x H 94.6 cm

Size: W 60.4 x D 60.4 x H 97.1 cm

A Hepplewhite style shield back side chair, the upholstered back with flame mahogany Veneered Back Supports, the upholstered seat on square tapering legs with satinwood faux fluted inlay.





TURQUOISE ENCOUNTER COCKTAIL TABLE

Item code: 5105-303-FML

Size: W 132 x D 132 x H 52 cm

A pollard burl and mother of pearl inlaid cocktail table, the square moulded edge top above panelled frieze drawers, the ebonised turned legs joined by a concave sided undertier. Inspired by a 19th century Italian original.

TURQUOISE ENCOUNTER SIDE TABLE

Item code: 5005-750-FML

Size: W 66 x D 66 x H 69 cm

A pollard burl and mother of pearl inlaid lamp table, the square moulded edge top above a panelled frieze drawer, the ebonised turned legs joined by an undertier. Inspired by a 19th century Italian original.





THE MARGUERITE CONSOLE TABLE

Item code: TA53001.C147

Size: W 152.4 x D 40.64 x H 81.28 cm

Rectangular Knotty Walnut Veneered and Parquetry Detailed Top
On Bowed X Metal Supports with Angle Capitals in Antique Pewter
Finish



Visit us in Marina Mall,
Abu Dhabi.

  **02 657 8444**

www.eldiar.ae

 [eldiar_uae](https://www.instagram.com/eldiar_uae)  [eldiaruae](https://www.facebook.com/eldiaruae)